

Upham Park Road, London, W4 1PQ

Guide Price £725,000

WHITMAN & CO.

SALES · LETTINGS · COMMERCIAL

- Share of freehold
- Private garden
- Fantastic transport links

- Well presented
- Sought after location
- No chain

Tenure - Leasehold + Share of freehold
 Lease Length - 950+ Years remaining
 Ground rent - Peppercorn
 Service Charge - 50% of outgoings
 Local Authority - Hounslow
 Council Tax - Band D

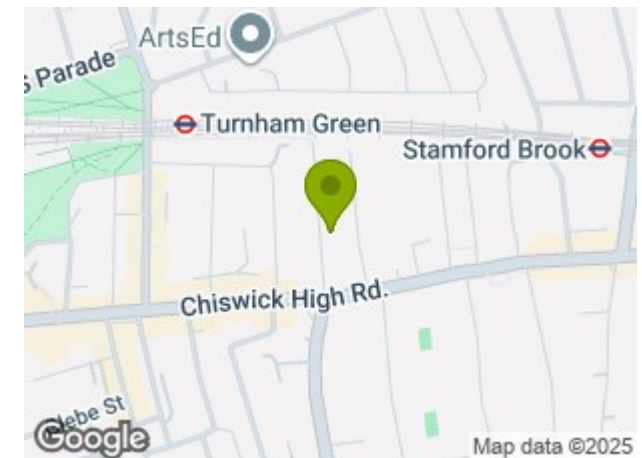
THE PROPERTY

An immaculately presented two-bedroom period conversion flat with a private garden, ideally located on a tree-lined residential road just north of Chiswick High Road.

The property offers two double bedrooms, a luxury bathroom with underfloor heating, a bright 13' reception room, and a fully fitted kitchen.

Further benefits include a share of the freehold, a lease of over 950 years, and no onward chain. Conveniently situated within close proximity to both Turnham Green and Stamford Brook tube stations, as well as the wide variety of shops, bars, and restaurants on Chiswick High Road.

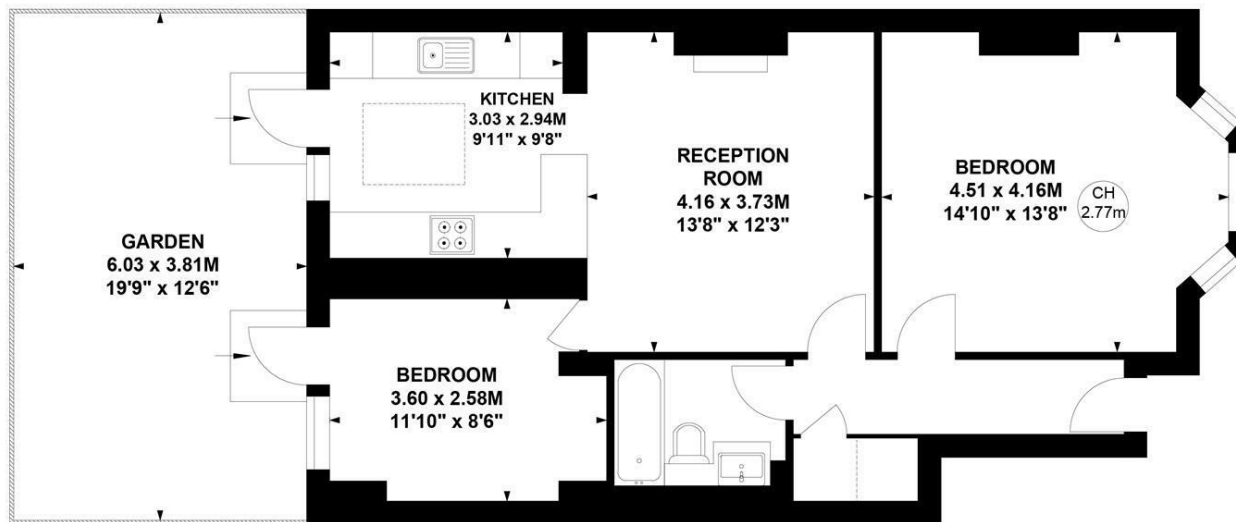
SITUATION



Upham Park Road, W4

Approximate Gross Internal Area
 64.60 sq m / 695 sq ft

Key :
 CH - Ceiling Height



Ground Floor

Not to scale, for guidance only and must not be relied upon as a statement of fact.
 All measurements and areas are approximate only

5-7 Turnham Green Terrace, Chiswick, London, W4 1RG
 Tel 020 8747 8800

E-mail sales@whitmanandco.com
 Website www.whitmanandco.com



MISREPRESENTATION ACT 1967

Whitman & Co. for themselves and for the vendors give notice that these particulars do not constitute any part of, an offer of contract. All statements contained in these particulars are made without responsibility on the part of Whitman & Co. or the vendor. None of the statements contained in these particulars is to be relied upon as statements or representations of facts. Any intending purchaser must satisfy himself by inspection or otherwise as to the correctness of each of the statements contained in these particulars. The vendor does not make or give, and neither Whitman & Co. or any person in their employment has any authority to make or give, any representation or warranty whatever in relation to the property.